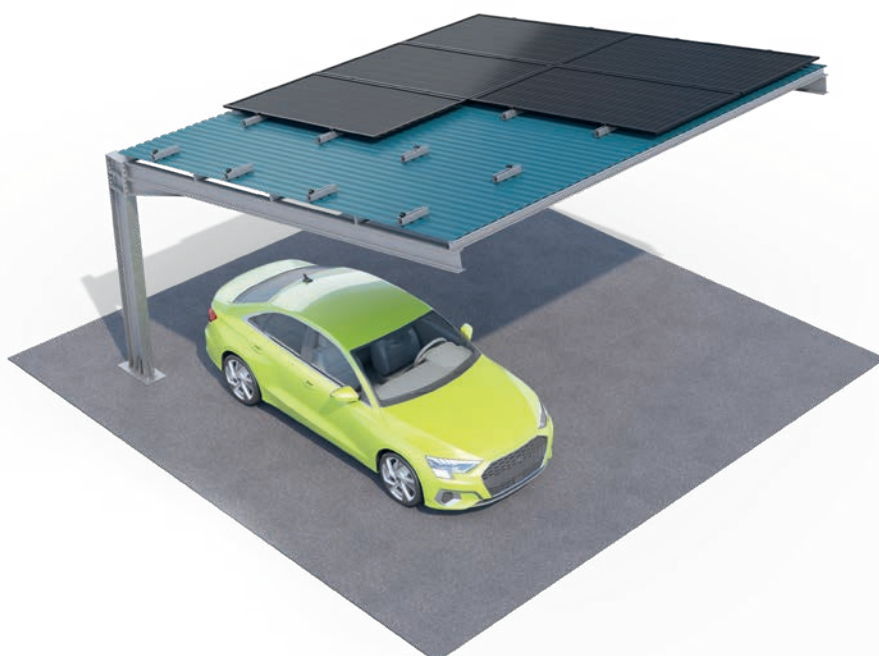


ENZEIT CARPORT



Mounting type



foundation-mounted

Support spacing



according to design

Tilt angle



10°

Module layout



horizontal / vertical

Scalable structure



possibility of expansion
with additional
parking spaces

Orientation



south

Optional



- inverter mounting
- additional cladding /
roofing

Warranty



10 years

Standards



EN 1090-1:2009+A1:2011
EN 1991-1-3:2003
EN 1991-1-4:2005
EN 1993-1-3:2024
EN 1993-1-8:2024
EN 1994-1-1:2004
EN 1999-1-1:2023
EN 1990:2023



Welcome to the world of Enzeit Technik, where innovation meets precision, and fresh perspectives are transformed into unique projects. We create solutions for professionals drawing on the rich experience of the GTV group.

Our production facility is certified under TÜV Rheinland Factory Production Control (FPC), covering EN 1090 standards (parts 1-5). This ensures full control over the manufacturing process and product quality.