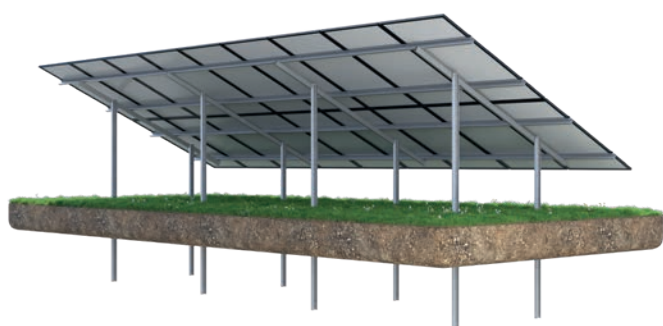
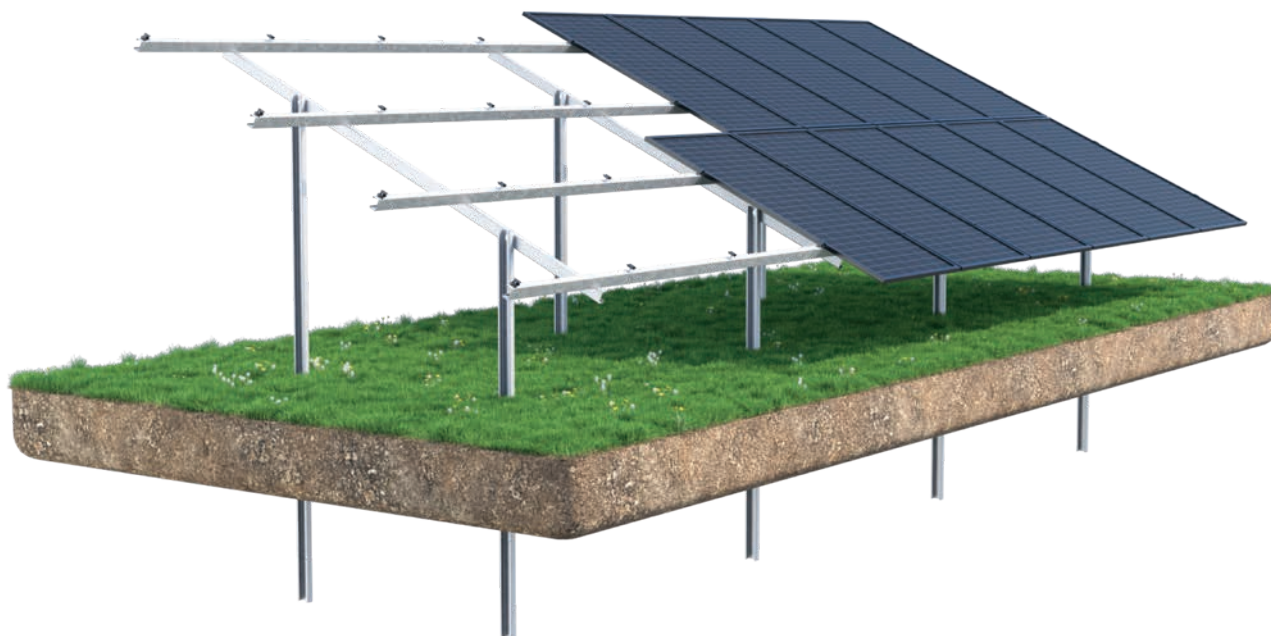




ENZEIT PRIME GM 2V



**Mounting
type**

rammed in,
root system



**Number of
supports**

double support,
3 mm thick



Material

steel with anti-
corrosion coating



Tilt angle

15°-35°



Warranty

10 years



**Module
layout**

vertical



**Module
height**

1700-2500 mm



**Module
width**

1000-1350 mm



Orientation

south

Standards



PN-EN-1090-1+A1:2012
PN-EN 1991-1-1:2004
PN-EN-1991-1-3:2005
PN-EN-1991-1-4:2008
PN-EN 1993-1-1:2006



Welcome to the world of Enzeit Technik, where innovation meets precision, and fresh perspectives are transformed into unique projects. We create solutions for professionals drawing on the rich experience of the GTV group.

The manufacturing process of PV systems at Enzeit Technik is covered by the Factory Production Control system overseen by TUV SUD Poland.