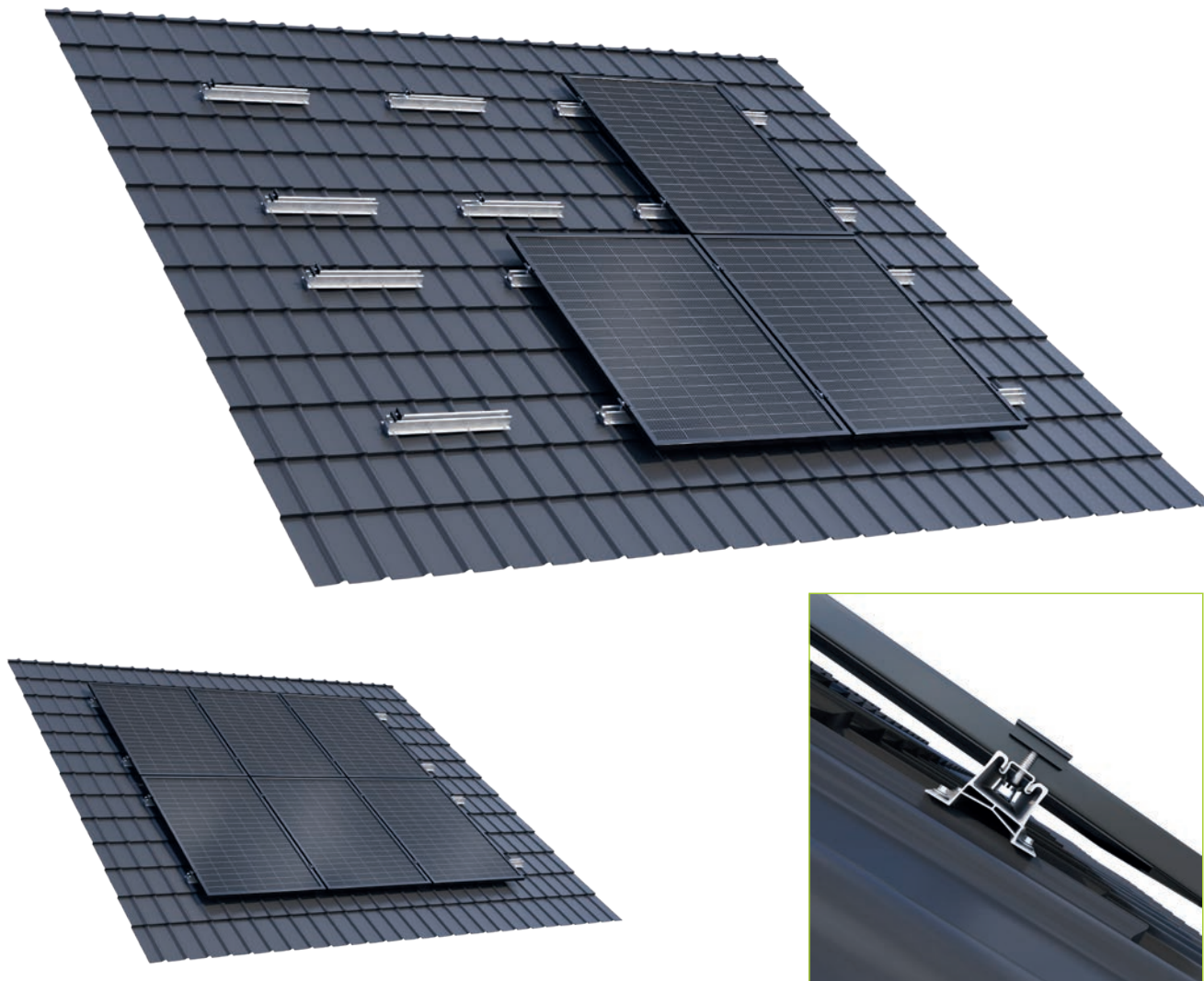




## ENZEIT WAVE



### Mounting type

invasive



### Roof covering

metal tile



### Material

aluminum



### Rail length

600 mm



### Warranty

10 years



### Module layout

vertical, horizontal



### Module height

any



### Module width

any



### Roof type

pitched

### Standards



PN-EN-1090-1+A1:2012  
PN-EN 1991-1-1:2004  
PN-EN-1991-1-3:2005  
PN-EN-1991-1-4:2008  
PN-EN 1993-1-1:2006



Welcome to the world of Enzeit Technik, where innovation meets precision, and fresh perspectives are transformed into unique projects. We create solutions for professionals drawing on the rich experience of the GTV group.

The manufacturing process of PV systems at Enzeit Technik is covered by the Factory Production Control system overseen by TUV SUD Poland.